

HIP REVISION SYSTEM

The **Tecomet Hip Revision System** includes everything needed to revise a total hip.

Our system is completely modular with an Acetabular Tray, Femoral Tray, Extraction Tray and Trepine Tray. The combination of the most widely used cement resection tips and removal instruments accommodate femoral and acetabular component removal. The Knee Revision System features various cement removal instrument tips to accommodate all types of revision situations. The ergonomic silicone handles are comfortable and withstand repeated sterilization.

The system cases are appropriately organized to accommodate specific procedures as deemed necessary during surgery.

Select instruments feature Radel® R handles which offer improved strength, rack resistance and optimum endurance to repeated steam autoclaving.

Contact your local Sales Manager or visit tecomet.com for more information.



3724 North SR 15
Warsaw, IN 46582 USA
Phone +1 574.267.8700

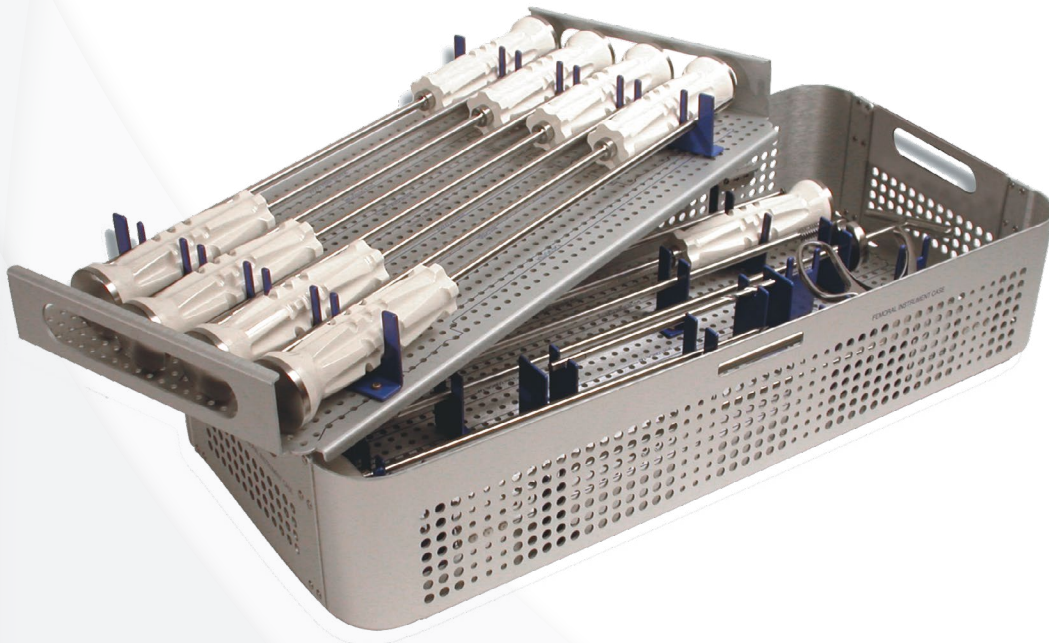
sales@tecomet.com
www.tecomet.com

Cat #: 5103-00
Rev. E
Printed in the USA ©2024
Tecomet. All rights reserved.

HIP REVISION SYSTEM

Femoral Tray Part Numbers

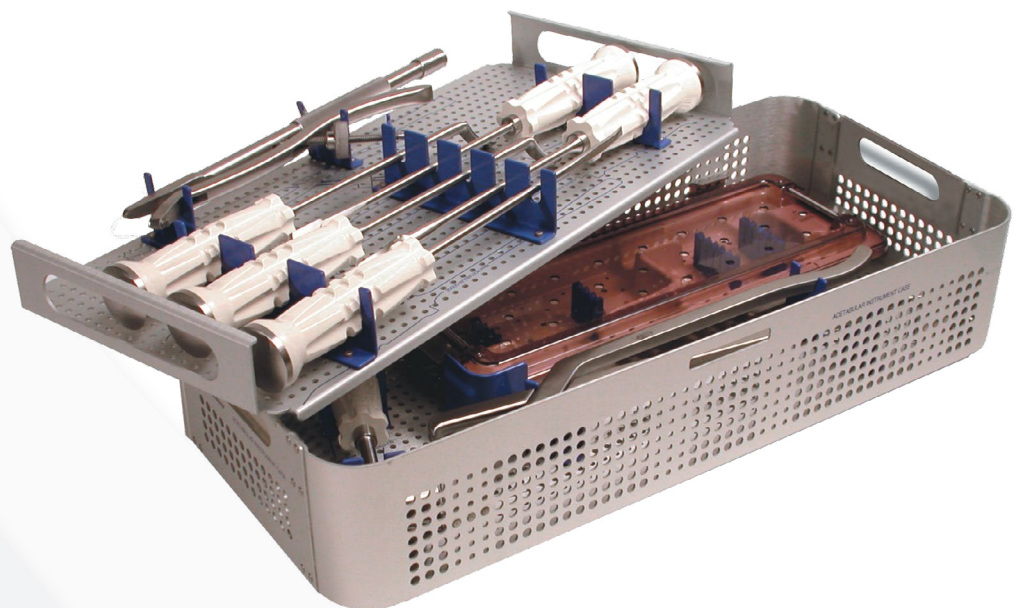
Complete Femoral Tray	30-037-000	Reverse Curette, 7mm x 17"	10-006-000
Crochet Hook	10-056-000	Reverse Curette, 9mm x 17"	10-007-000
Flag Splitter	10-001-000	Reverse Curette, 11mm x 17"	10-055-000
"V" Splitter	10-002-000	"X" Osteotome, 7mm x 17"	10-008-000
Chisel, 8mm x 17"	10-003-000	Conical Tap, 9mm	12-008-000
Modified Angled Gouge	10-004-000	Conical Tap, 11mm	12-009-000
Straight Gouge	10-005-000	1/4" Twist Drill	15-001-000
Long Rongeur w/Serrated Teeth, 300mm	15-003-000	5/16" Twist Drill	11-001-000
Reverse Curette, 6mm x 17"	10-054-000	Metal Case	25-020-000



HIP REVISION SYSTEM

Acetabular Tray Part Numbers

Complete Acetabular Tray	30-036-000
Acetabular Gouge, 48mm x 1/2" Wide	10-057-000
Acetabular Gouge, 52mm x 1/2" Wide	10-058-000
Acetabular Gouge, 56mm x 1/2" Wide	10-059-000
Round Acetabular Component Gripper	10-011-000
Acetabular Component Gripper	12-006-000
Acetabular Component Forceps	14-001-000
Slotted Mallet w/Delrin Cap	10-102-000
Curved Acetabular Chisel	10-010-000
Flexible Osteotome Set	30-005-000
Metal Case	25-021-000



HIP REVISION SYSTEM

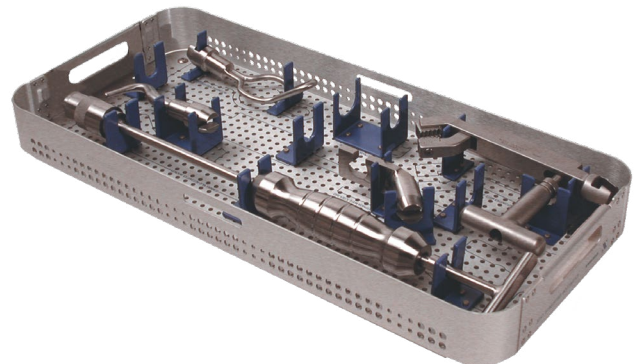
Flexible Osteotome Part Numbers



Complete Flexible Osteotome	30-004-000
Small Slap Hammer	12-007-000
Thin Osteotome Blade, 8mm x 2.5"	11-002-000
Thin Osteotome Blade, 10mm x 2.5"	11-003-000
Thin Osteotome Blade, 12mm x 2.5"	11-004-000
Thin Osteotome Blade, 20mm x 2.5"	11-005-000
Thin Osteotome Blade, 8mm x 5"	11-009-000
Thin Osteotome Blade, 10mm x 5"	11-008-000
Thin Osteotome Blade, Curved, 12mm x 2.5"	11-006-000
Thin Osteotome Blade, Curved, 20mm x 5"	11-007-000
Quick-Coupling Handle (2 per set)	10-020-000
Metal Case	25-020-000

Extractor Tray Part Numbers

Complete Extractor Tray	30-035-000
Femoral Extractor	12-001-000
Universal Modular Hip Stem Extractor	12-031-000
One-Piece Stem Adapter	12-004-000
Closed Loop Extractor	12-029-000
Hook Stem Extractor	12-030-000
Metal Case	v25-022-000



HIP REVISION SYSTEM

Trephine Tray Part Numbers

Complete Trephine Tray	30-014-000	Trephine 20mm ID x 8"	10-072-000
Trephine 11mm ID x 8"	10-063-000	Trephine 21mm ID x 8"	10-073-000
Trephine 12mm ID x 8"	10-064-000	Trephine 22mm ID x 8"	10-074-000
Trephine 13mm ID x 8"	10-065-000	Trephine 23mm ID x 8"	10-099-000
Trephine 14mm ID x 8"	10-066-000	Trephine 24mm ID x 8"	10-101-000
Trephine 15mm ID x 8"	10-067-000	Slap Hammer Shaft	12-028-000
Trephine 16mm ID x 8"	10-068-000	T-Bar Stem Extractor	10-062-000
Trephine 17mm ID x 8"	10-069-000	Wrench	10-075-000
Trephine 18mm ID x 8"	10-070-000	Quick Connect T-Handle	10-023-000
Trephine 19mm ID x 8"	10-071-000	Metal Case	25-023-000

